



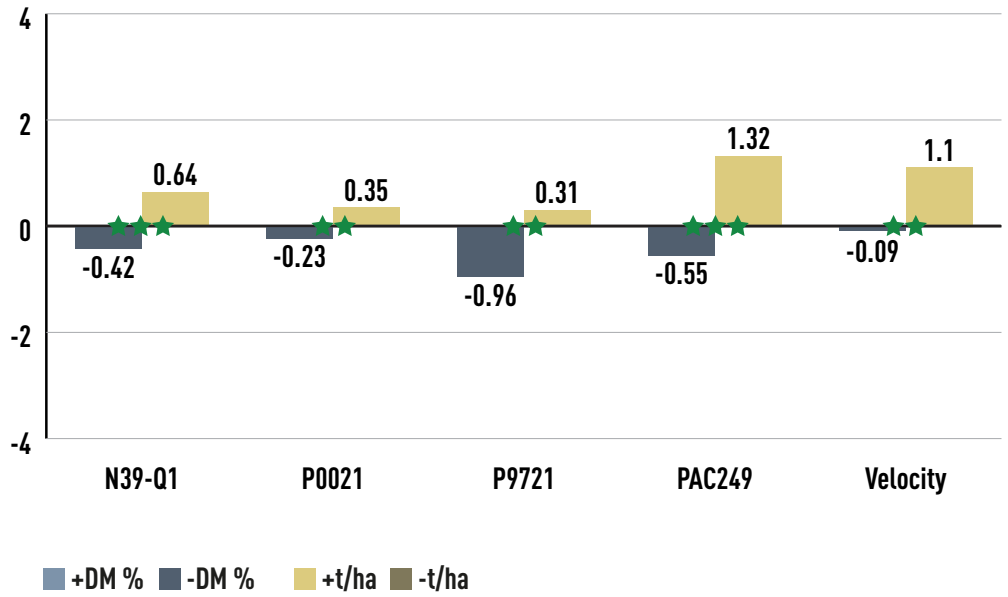
VP483

98 CRM

GRAIN



VP483 GRAIN VS COMPETITOR HYBRIDS



Competitor	Moisture%	Yield (kgDM/ha)	Significance	Trials
N39-Q1	-0.42	645	★★★	50
P0021	-0.23	347	★★	102
P9721	-0.96	306	★★	90
PAC249	-0.55	1324	★★★	17
Velocity	-0.09	1104	★★	12



100% NZ OWNED & OPERATED



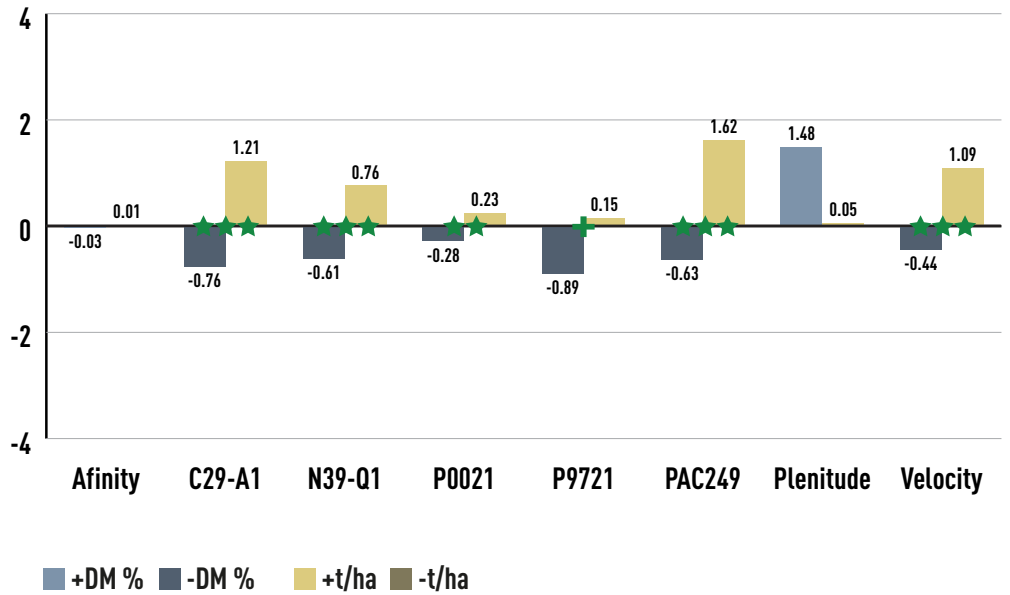
VP483

98 CRM

GRAIN



VP483 GRAIN VS COMPETITOR HYBRIDS



Competitor	Moisture%	Yield (kgDM/ha)	Significance	Trials
Afinity	-0.03	8	NS	45
C29-A1	-0.76	1213	★★★	69
N39-Q1	-0.61	759	★★★	107
P0021	-0.28	233	★★	230
P9721	-0.89	154	+	195
PAC249	-0.63	1615	★★★	29
Plenitude	1.48	49	NS	34
Velocity	-0.44	1091	★★★	19



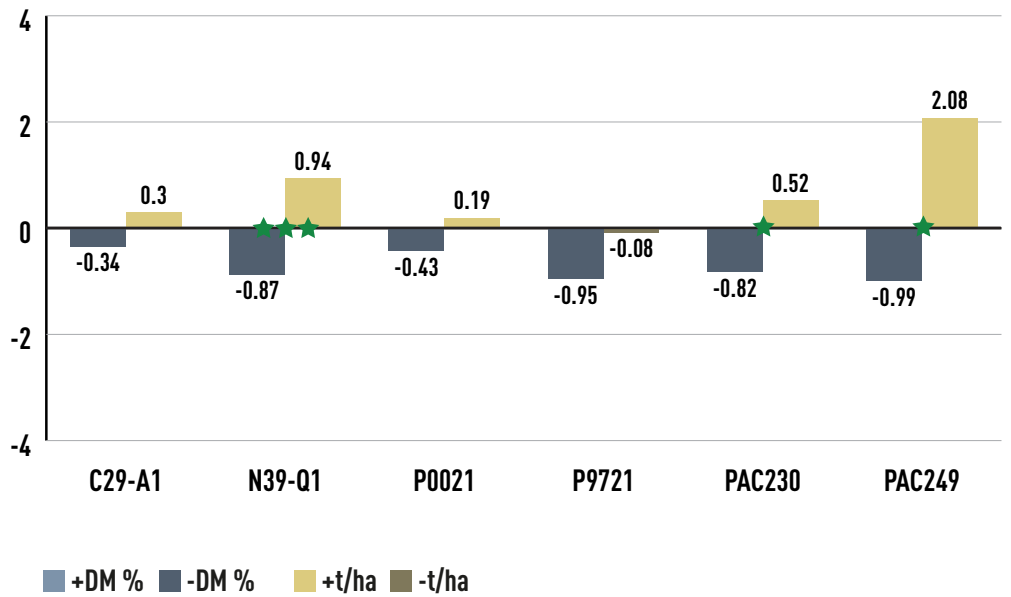


VP483 GRAIN VS COMPETITOR HYBRIDS

VP483

98 CRM

GRAIN



Competitor	Moisture%	Yield (kgDM/ha)	Significance	
C29-A1	-0.34	296	NS	21
N39-Q1	-0.87	937	★★★	48
P0021	-0.43	194	NS	94
P9721	-0.95	-76	NS	81
PAC230	-0.82	519	★	25
PAC249	-0.99	2075	★	9

