



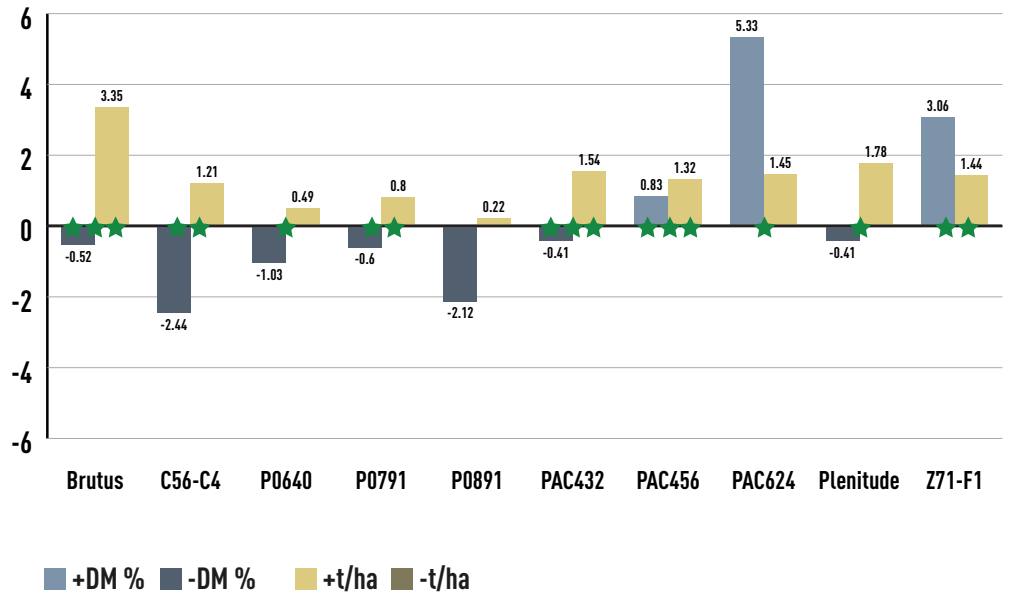
VP577 SILAGE VS COMPETITOR HYBRIDS



VP577

107 CRM

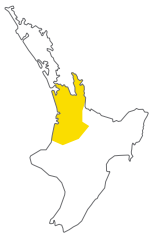
SILAGE



| Competitor | DM% | Yield (kgDM/ha) | Significance | Trials |
|------------|-------|-----------------|--------------|--------|
| Brutus | -0.52 | 3348 | ★★★ | 11 |
| C56-C4 | -2.44 | 1205 | ★★ | 33 |
| P0640 | -1.03 | 491 | ★ | 81 |
| P0791 | -0.60 | 796 | ★★ | 97 |
| P0891 | -2.12 | 221 | NS | 115 |
| PAC432 | -0.41 | 1545 | ★★★ | 31 |
| PAC456 | 0.83 | 1320 | ★★★ | 50 |
| PAC624 | 5.33 | 1450 | ★ | 21 |
| Plenitude | -0.41 | 1781 | ★ | 22 |
| Z71-F1 | 3.06 | 1437 | ★★ | 42 |



100% NZ OWNED & OPERATED

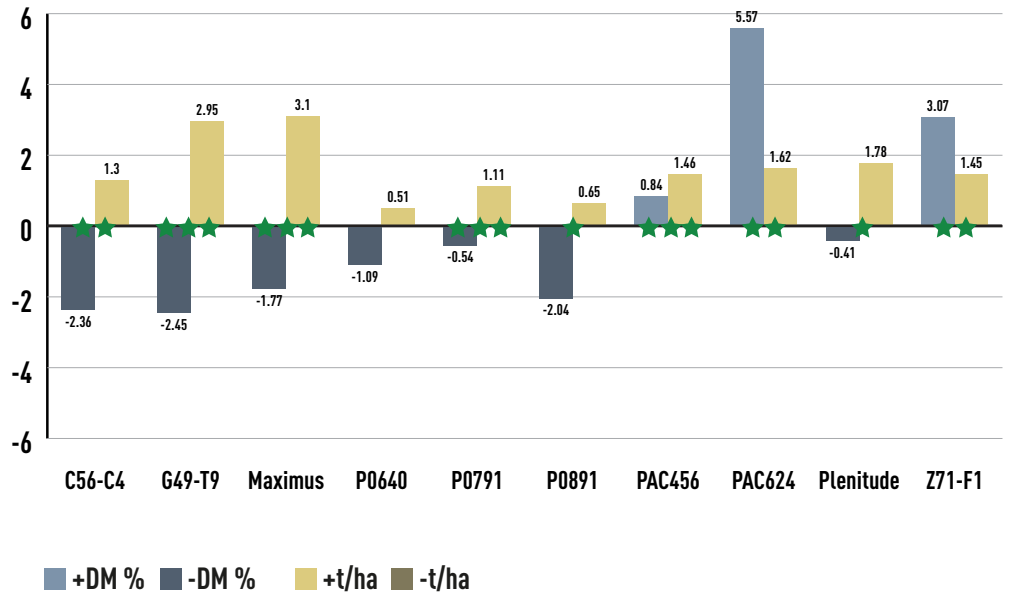


VP577 SILAGE VS COMPETITOR HYBRIDS

VP577

107 CRM

SILAGE



| Competitor | DM% | Yield (kgDM/ha) | Significance | Trials |
|------------|-------|-----------------|--------------|--------|
| C56-C4 | -2.36 | 1297 | ★★ | 31 |
| G49-T9 | -2.45 | 2955 | ★★★ | 36 |
| Maximus | -1.77 | 3100 | ★★★ | 29 |
| P0640 | -1.09 | 509 | CA | 70 |
| P0791 | -0.54 | 1113 | ★★★ | 78 |
| P0891 | -2.04 | 648 | ★ | 89 |
| PAC456 | 0.84 | 1457 | ★★★ | 45 |
| PAC624 | 5.57 | 1625 | ★★ | 19 |
| Plenitude | -0.41 | 1781 | ★ | 22 |
| Z71-F1 | 3.07 | 1454 | ★★ | 38 |



100% NZ OWNED & OPERATED