

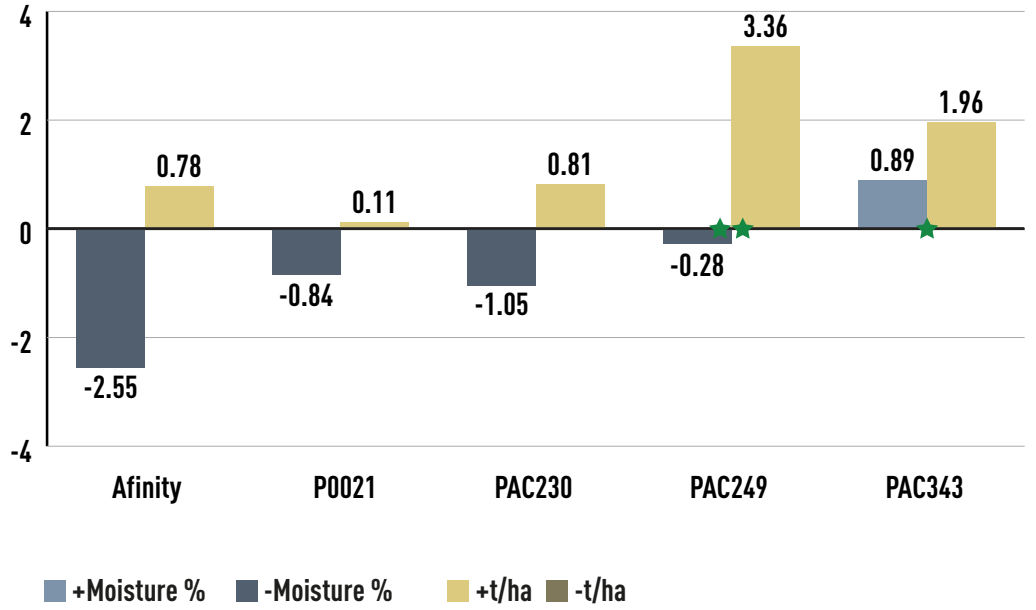


# VP522 SILAGE VS COMPETITOR HYBRIDS

# VP522

102 CRM

# SILAGE



Competitor	Moisture%	Yield (kgDM/ha)	Significance	Trials
Afinity	-2.55	782	NS	12
P0021	-0.84	112	NS	12
PAC230	-1.05	812	NS	15
PAC249	-0.28	3358	★★	7
PAC343	0.89	1963	★	6



**100% NZ  
OWNED &  
OPERATED**

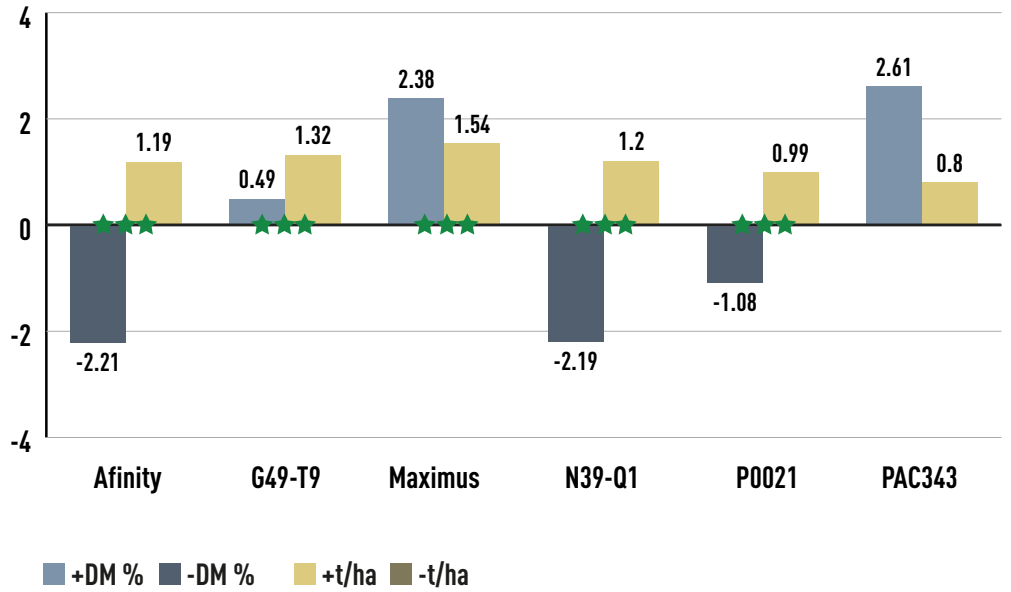


# VP522

102 CRM

# SILAGE

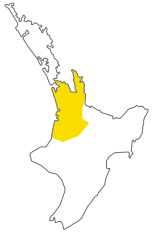
## VP522 SILAGE VS COMPETITOR HYBRIDS



Competitor	DM%	Yield (kgDM/ha)	Significance	Trials
Afinity	-2.21	1188	★★★★	49
G49-T9	0.49	1319	★★★★	59
Maximus	2.38	1536	★★★★	21
N39-Q1	-2.19	1203	★★★★	60
P0021	-1.08	989	★★★★	48
PAC343	2.61	802	CA	25



100% NZ OWNED & OPERATED

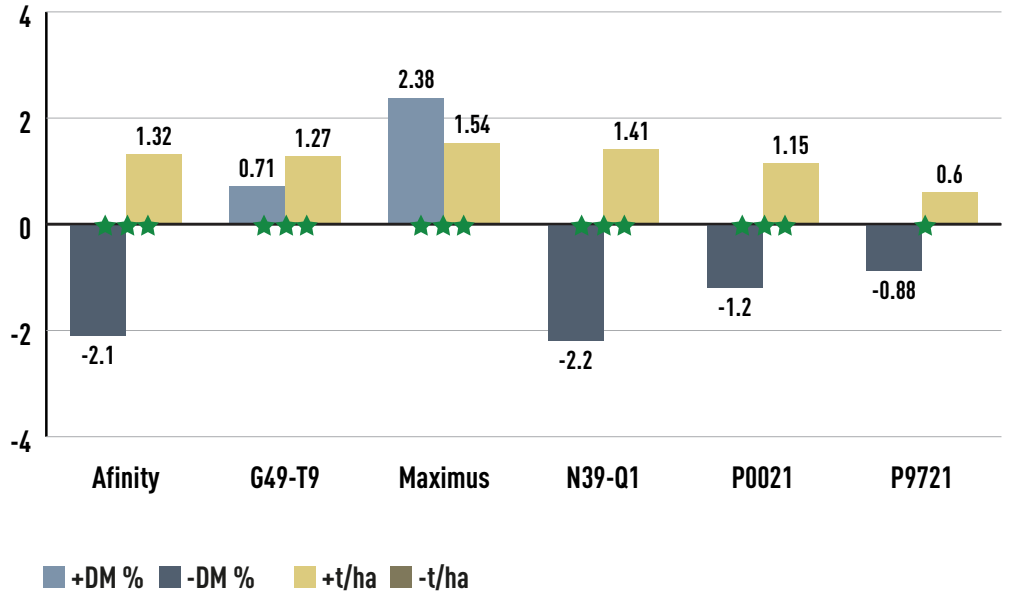


# VP522 SILAGE VS COMPETITOR HYBRIDS

# VP522

102 CRM

# SILAGE



Competitor	DM%	Yield (kgDM/ha)	Significance	Trials
Afinity	-2.10	1320	★★★★	37
G49-T9	0.71	1273	★★★★	49
Maximus	2.38	1536	★★★★	21
N39-Q1	-2.20	1412	★★★★	47
P0021	-1.20	1146	★★★★	37
P9721	-0.88	602	★	30



**100% NZ OWNED & OPERATED**